

# TILE TRIMS & MOVEMENT JOINTS

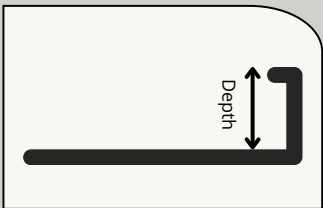
TECHNICAL  
**DATASHEET**

V1 2024

The Quantum logo features a stylized purple 'Q' followed by the word 'Quantum' in a white, italicized sans-serif font.

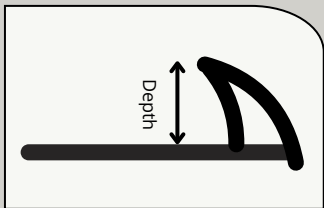
# PRODUCT OVERVIEW

Quantum provides a comprehensive range of tile trims and movement joints designed to protect and enhance tiled surfaces. Our trims are available in various materials, including high-quality aluminium, stainless steel, and durable PVC, ensuring optimal performance in residential, commercial, and industrial applications. Whether you're looking for corrosion-resistant profiles for exterior use or decorative trims for interior applications, Quantum offers solutions tailored to meet every tiling need.



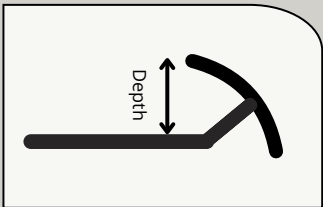
## Straight Edge

Designed to provide a neat finish to tiled corners and edges.



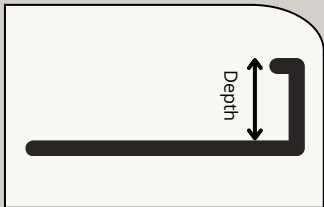
## Round Closed Profile

A closed rounded decorative edge to finish tiled corners and edges.



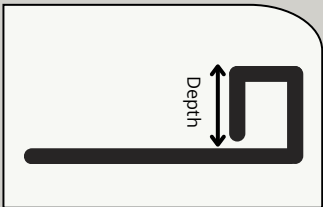
## Round Open Profile

Protects and neatly finishes tiled corners and edge.



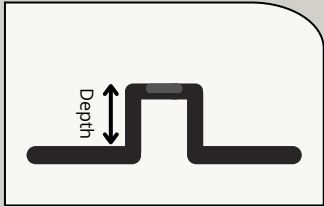
## Formable Edge Trim

Formable design provides protection and neat finish to curved tile edges.



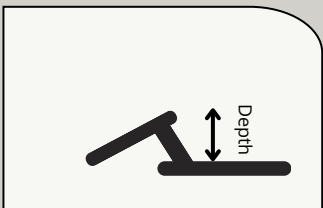
## Cubec Trim

A right-angled edge, provides a decorative finish to edges or tile borders.



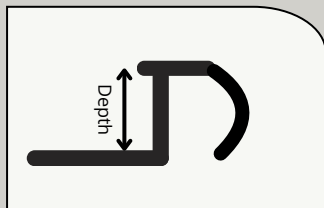
## Movement Joints

Suitable for both wall and floor applications.



## Transition Profile

Provides a join between floor coverings of different heights.



## Round Edge Stair Trim

Protective round stair edge trim to provide edge covering and added grip.

# TECHNICAL INFORMATION

## PVC

### MATERIAL PROPERTIES

---

Polyvinyl chloride (PVC) is a highly versatile material which is ideal for tile trims and movement joints that are used to protect and finish tiled corners and edges. Its chemical composition, combined with specific additives, offers significant resistance to oils, alcohols, fats, and a wide range of chemicals, including petrol, making it suitable for numerous environments. Due to its inherent durability and resistance to corrosion, PVC tile trims are commonly recommended for domestic and light commercial use, although it is essential to evaluate the specific application and environmental factors such as chemical reactions and mechanical stresses when specifying products.

PVC's cost-effectiveness, biological and chemical resistance, and ease of manufacturing have driven its popularity in various industries. However, PVC is not recommended for use in environments where the temperature exceeds 60°C, nor in situations involving aromatic and chlorinated hydrocarbons, ketones, nitrocompounds, esters, or cyclic ethers, as these substances can cause swelling or degradation of the material. This temperature limitation and chemical compatibility should be carefully considered during the specification process.

### MANUFACTURING PROCESS AND FINISH OPTIONS

---

PVC is produced through the polymerization of vinyl chloride monomer, with additives that tailor its properties for specific applications. Commonly, plasticisers are added to enhance flexibility and performance, while heat stabilisers are crucial for ensuring the product's longevity in a range of environments. The inherent hardness and mechanical strength of PVC make it particularly robust for tile trims, yet flexible enough for movement joints where thermal expansion or contraction of tiles may occur.

We supply a variety of PVC trims and movement joints in multiple colours, offering both functional and decorative finishes. Available shades include white, black, grey, light grey, and jasmine, catering to different aesthetic requirements. While PVC is generally fade-resistant, although prolonged exposure to sunlight may lead to some colour loss, particularly in outdoor applications.

### INSTALLATION AND MAINTENANCE

---

The installation process is a key factor in ensuring the durability and lifespan of PVC trims. It is important that the PVC is in good condition prior to installation, with any surface contamination addressed through thorough cleaning. While PVC does not require special maintenance, in highly regulated industries such as aerospace, pharmaceuticals, or food handling, additional precautions may be necessary to maintain a high level of cleanliness.

To maintain their appearance, PVC trims should be cleaned regularly using soft cloths, water, or mild detergents. Abrasive cleaning tools and chloride-containing solutions, such as bleach, should be avoided to prevent surface damage. While PVC does not require specialized maintenance, ensuring regular care will extend the product's lifespan and preserve its aesthetic appeal.

# Brass

## MATERIAL PROPERTIES

---

Brass is well-known for its bright, gold-like appearance, making it a popular choice for aesthetic purposes, although it is also highly functional as it is an alloy of copper and zinc, with variable ratios of the two elements yielding different types of brass. This versatility allows brass to be used in various applications, and within our range of tile trims and movement joints, we offer both solid brass and brass-coated finishes. Solid brass is specifically recommended for areas subject to heavy wear or where enhanced protection is required due to its strength and durability.

While brass can withstand high mechanical stresses and exhibits good resistance to certain chemicals, its oxidation when exposed to air is a natural characteristic. Over time, brass develops a patina, a surface tarnish that, while some find attractive, can be removed through polishing if a bright finish is desired. Brass is also noted for its antimicrobial properties, largely attributed to its copper content. Studies have demonstrated that brass can kill a wide range of microorganisms, including antibiotic-resistant bacteria such as MRSA, making it suitable for environments where hygiene is a priority.

## MANUFACTURING PROCESS AND FINISH OPTIONS

---

Brass's resistance to wear and its mechanical robustness are a result of its copper-zinc composition. The higher the copper content, the softer the brass, allowing for different levels of workability depending on the application. Brass tile trims are available in both solid form, ideal for high-traffic or heavy-duty areas, and brass-coated variants, which provide aesthetic appeal without the weight or cost of solid brass. Its antimicrobial properties further extend its usage into domestic, commercial, and industrial environments where cleanliness and durability are key.

Solid brass is prized for its golden, reflective finish, making it an ideal material for decorative trims and joints. In addition, our brass-coated finishes offer a similar aesthetic appeal at a lower cost, although they will require similar care over time to maintain their appearance.

## INSTALLATION AND MAINTENANCE

---

Proper installation is critical for ensuring the long-term performance of brass trims. Prior to installation, brass should be inspected and cleaned if necessary to remove any contaminants that may compromise adhesion or appearance. Simple washing with soapy water and drying is generally sufficient preparation. After installation, brass requires periodic maintenance to prevent tarnishing and maintain its aesthetic appeal.

Depending on the environmental conditions, this could range from one to ten cleanings per year. A careful polishing routine, without over-application of polish, will extend the lifespan and appearance of brass. Over-polishing can lead to smudging or discoloration, with the surface turning black in some cases due to improper use of polish. For routine cleaning, abrasive tools should be avoided to protect the brass's finish. Chloride-containing solutions, like bleach, should also be kept away from brass surfaces to prevent damage.

# Aluminium

## MATERIAL PROPERTIES

---

Aluminium is a lightweight, durable metal known for its excellent corrosion resistance and high strength-to-weight ratio, making it an ideal material for tile trims and movement joints. Its naturally occurring oxide layer forms a protective barrier against environmental factors, preventing rust and degradation over time. This inherent durability makes aluminium suitable for both indoor and outdoor applications, from domestic to commercial and industrial settings. Additionally, aluminium's sleek, metallic appearance makes it a popular choice for modern, minimalist design aesthetics in tiling projects.

Aluminium is resistant to a variety of chemicals but can corrode when exposed to certain harsh environments, particularly those containing strong acids or alkalis. Its resistance to oxidation is a significant advantage, as aluminium will not rust in the same way as ferrous metals. However, aluminium can undergo galvanic corrosion when in contact with other metals, particularly copper, in the presence of an electrolyte, such as water. Careful consideration must be given to its installation environment to ensure compatibility with other materials.

## MANUFACTURING PROCESS AND FINISH OPTIONS

---

Aluminium is typically extracted from bauxite ore and then refined and processed into various forms through extrusion, rolling, or casting, depending on the intended application. For tile trims and movement joints, aluminium is often extruded into precise profiles that provide both structural support and a clean finish to tiled edges. One of aluminium's key benefits is its lightweight nature, which simplifies installation without compromising strength. This combination of low weight and high mechanical strength makes aluminium a versatile choice for applications where both durability and ease of handling are critical.

Aluminium is commonly supplied with a natural anodised finish, which enhances its corrosion resistance and provides a sleek, matt appearance. Powder coating is a popular option, providing a thick, durable coating that can withstand wear and tear, while offering more extensive colour choices. These finishes not only enhance the visual appeal of aluminium trims but also increase their resilience in harsh environments.

## INSTALLATION AND MAINTENANCE

---

Aluminium tile trims and movement joints are easy to install due to their lightweight nature. However, as with other metals, it is important to ensure that the surface is clean and free from contaminants before installation to prevent adhesion or corrosion issues later on. Aluminium is highly resistant to weathering but may benefit from occasional cleaning to remove surface dirt and maintain its aesthetic. A simple wipe with a soft cloth and water is typically enough for routine maintenance. If necessary, a mild detergent can be used to lift stains. Installation quality significantly impacts aluminium's longevity and appearance, so proper preparation and care are key.

Aluminium's low maintenance requirements make it a practical choice for tile trims. While it resists corrosion naturally, regular cleaning will help maintain its appearance and performance over time. Abrasive cleaning materials should be avoided to prevent scratching the anodized or coated surface. Like other metals, aluminium can be sensitive to harsh chemicals, so avoiding products with strong acids or alkalis is essential.

# Stainless Steel

## MATERIAL PROPERTIES

---

Stainless steel is an alloy composed primarily of iron, chromium, and other elements such as nickel or molybdenum, providing it with exceptional resistance to corrosion and staining. The chromium content in stainless steel reacts with oxygen in the air to form a thin, stable oxide layer that protects the material from rust and corrosion. This makes stainless steel an excellent choice for tile trims and movement joints in environments exposed to moisture or humidity, such as kitchens, bathrooms, or exterior installations. Its high tensile strength also ensures durability in both residential and commercial applications.

Stainless steel is highly resistant to rust and corrosion, even in harsh environments. However, certain aggressive chemicals, such as strong acids and chlorides, can lead to pitting or localized corrosion. Care must be taken when using stainless steel in areas exposed to such substances. While stainless steel is versatile and durable, it may not perform as well in environments with extreme chemical exposure, and its surface can develop stains if not properly maintained. However, its overall resistance to weathering, oxidation, and mechanical stress makes it suitable for a wide range of uses.

## MANUFACTURING PROCESS AND FINISH OPTIONS

---

Stainless steel is manufactured by melting iron ore and scrap metals, to which chromium and other alloying elements are added. The alloy is then cast into various shapes and forms. In the production of tile trims and movement joints, stainless steel is typically rolled or extruded into precise profiles that provide both structural integrity and a polished finish. Stainless steel's hardness, strength, and resistance to deformation under stress make it particularly effective in areas subject to heavy use or impact. The presence of nickel and molybdenum in certain grades of stainless steel further enhances its resistance to corrosion in more demanding environments.

Stainless steel tile trims are valued for their sleek, modern appearance, with a polished or brushed finish that complements contemporary architectural designs. Polished stainless steel offers a reflective, mirror-like surface, while a brushed finish provides a softer, matt look with subtle texture. These finishes are both functional and decorative, enhancing the visual appeal of tiled edges while offering durable protection.

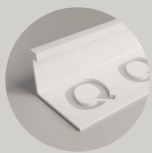
## INSTALLATION AND MAINTENANCE

---

Installing stainless steel tile trims and movement joints is relatively straightforward, thanks to its strength and resistance to damage during handling. However, to ensure the best results, the stainless steel surface should be inspected and cleaned prior to installation to remove any contaminants or debris that might interfere with adhesion or cause surface damage. Stainless steel can withstand a wide range of environmental conditions but may require occasional cleaning to maintain its aesthetic appeal, particularly in high-traffic or industrial areas where exposure to dirt and oils is common.

Mild soap and water are typically sufficient for routine cleaning, while stubborn stains can be addressed with a non-abrasive cleaner specifically designed for stainless steel. Abrasive pads or harsh cleaning agents, especially those containing chloride, should be avoided to prevent surface damage. Stainless steel's protective oxide layer can be easily maintained by wiping down the surface regularly and avoiding contact with corrosive materials. A proper cleaning routine ensures the long-term performance and aesthetic of stainless steel in both decorative and functional applications.

# FINISHES



White



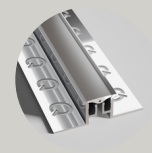
Jasmine



Grey



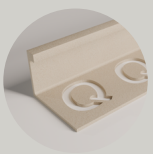
Black



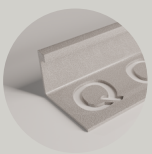
Light Grey



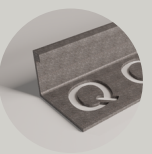
Limestone



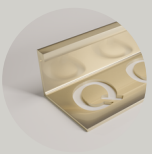
Sandstone



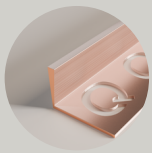
Granite



Basalt



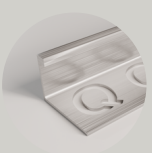
Brass



Copper

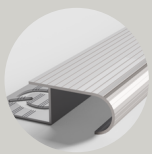


Bronze

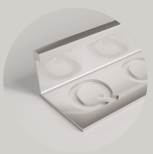


Chrome

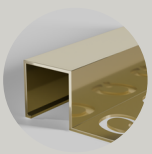
# EFFECTS



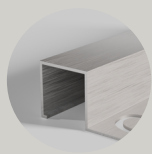
Mill



Satin



Polished



Brushed



Matt

# PRODUCT SPECIFICATIONS

## STRAIGHT EDGE TRIMS

Dimensions				Material				Finish														Effect				
Stock Code	Depth (mm)	Length (2.5m)	Length (3m)	PVC	Brass	Aluminium	Stainless Steel	White	Jasmine	Grey	Black	Light Grey	Limestone	Sandstone	Granite	Basalt	Brass	Copper	Bronze	Chrome	Mill	Satin	Polished	Brushed	Matt	
4342	6																									
4343	8																									
4344	10																									
4358	12																									
4664	8																									
4379	10																									
4383	12																									
4445	8																									
4447	10																									
4449	12																									
4371	8																									
4372	10																									
4373	12																									
4468	8																									
4470	10																									
4472	12.5																									
4488	8																									
4490	10																									
4492	12.5																									
4493	15																									
4408	8																									
4410	10																									
4412	12.5																									
4551	8																									
4552	10																									
4553	12.5																									
4504	15																									
4505	18																									
4507	22																									
4508	8																									
4510	10																									
4512	12.5																									
4549	15																									
4448	8																									
4450	10																									
4452	12.5																									
4454	15																									



STRAIGHT EDGE TRIMS

Dimensions				Material				Finish												Effect					
Stock Code	Depth (mm)	Length (2.5m)	Length (3m)	PVC	Brass	Aluminium	Stainless Steel	White	Jasmine	Grey	Black	Light Grey	Limestone	Sandstone	Granite	Basalt	Brass	Copper	Bronze	Chrome	Mill	Satin	Polished	Brushed	Matt
4456	18.5																								
4458	20																								
4460	22.5																								
4451	8																								
4467	10																								
4478	11																								
4469	12.5																								
4471	15																								
4967	10																								
4968	12.5																								
4969	15																								
4961	8																								
4962	10																								
4963	12.5																								

ROUND CLOSED PROFILE

Dimensions				Material				Finish												Effect					
Stock Code	Depth (mm)	Length (2.5m)	Length (3m)	PVC	Brass	Aluminium	Stainless Steel	White	Jasmine	Grey	Black	Light Grey	Limestone	Sandstone	Granite	Basalt	Brass	Copper	Bronze	Chrome	Mill	Satin	Polished	Brushed	Matt
4014	8																								
4015	10																								
4018	12																								
4023	8																								
4024	10																								
4025	12																								
4030	8																								
4031	10																								

ROUND OPEN PROFILE

Dimensions				Material				Finish														Effect				
Stock Code	Depth (mm)	Length (2.5m)	Length (3m)	PVC	Brass	Aluminium	Stainless Steel	White	Jasmine	Grey	Black	Light Grey	Limestone	Sandstone	Granite	Basalt	Brass	Copper	Bronze	Chrome	Mill	Satin	Polished	Brushed	Matt	
4381	9																									
4385	10.5																									
4394	12																									

# FORMABLE EDGE TRIM

Dimensions				Material				Finish														Effect				
Stock Code	Depth (mm)	Length (2.5m)	Length (3m)	PVC	Brass	Aluminium	Stainless Steel	White	Jasmine	Grey	Black	Light Grey	Limestone	Sandstone	Granite	Basalt	Brass	Copper	Bronze	Chrome	Mill	Satin	Polished	Brushed	Matt	
4528	8																									
4530	10																									
4532	12																									
4535	15																									
4538	8																									
4540	10																									
4542	12.5																									

# CUBEC TRIMS

Dimensions				Material				Finish														Effect				
Stock Code	Depth (mm)	Length (2.5m)	Length (3m)	PVC	Brass	Aluminium	Stainless Steel	White	Jasmine	Grey	Black	Light Grey	Limestone	Sandstone	Granite	Basalt	Brass	Copper	Bronze	Chrome	Mill	Satin	Polished	Brushed	Matt	
4567	10																									
4577	12.5																									
4865	10																									
4866	12.5																									
7726	10																									
7727	12.5																									
7728	10																									
7729	12.5																									
7732	10																									
7733	12.5																									
7730	10																									
7731	12.5																									
7724	10																									
7725	12.5																									
7718	10																									
7719	12.5																									
7716	10																									
7717	12.5																									
7722	10																									
7723	12.5																									
7720	10																									
7721	12.5																									

# MOVEMENT JOINTS

Dimensions				Material				Finish														Effect				
Stock Code	Depth (mm)	Length (2.5m)	Length (3m)	PVC	Brass	Aluminium	Stainless Steel	White	Jasmine	Grey	Black	Light Grey	Limestone	Sandstone	Granite	Basalt	Brass	Copper	Bronze	Chrome	Mill	Satin	Polished	Brushed	Matt	
4844	10																									
4845	12																									
4847	10																									
4848	12																									
4743	10																									
4752	12.5																									
4746	10																									
4753	12.5																									
4793	10																									
4795	12.5																									
4794	10																									
4796	12.5																									

# TRANSITION PROFILE

Dimensions				Material				Finish														Effect				
Stock Code	Height (mm)	Width (mm)	Length (2.5m)	PVC	Brass	Aluminium	Stainless Steel	White	Jasmine	Grey	Black	Light Grey	Limestone	Sandstone	Granite	Basalt	Brass	Copper	Bronze	Chrome	Mill	Satin	Polished	Brushed	Matt	
4663	10	20																								
4664	12	23																								

# ROUND STAIR EDGE TRIM

Dimensions				Material				Finish														Effect				
Stock Code	Height (mm)	Length (2.5m)	Length (3m)	PVC	Brass	Aluminium	Stainless Steel	White	Jasmine	Grey	Black	Light Grey	Limestone	Sandstone	Granite	Basalt	Brass	Copper	Bronze	Chrome	Mill	Satin	Polished	Brushed	Matt	
4932	10																									

PLEASE NOTE: ALL TECHNICAL SPECIFICATIONS &  
INFORMATION IS SUPPLIED IN GOOD FAITH IN  
ACCORDANCE WITH OUR TERMS AND CONDITIONS AND  
TO THE BEST OF OUR KNOWLEDGE AT THE TIME OF  
PRODUCTION.

IRELAND  
4 COURTAULD WAY,  
CAMPSIE, L'DERRY  
N. IRELAND, BT47 3DN  
+44 (0)28 7131 2064

UK  
36-37 CAVENDISH WAY,  
SOUTHFIELD INDUSTRIAL ESTATE, GLENROTHES,  
SCOTLAND, KY6 2SB  
+44 (0)1738 231 800

**QUANTUMGROUPNI.COM**

